



#### GENERAL

- L.O.A 47.00 m
- L.B.P 43.72 m
- BEAM MLD . 10.9 m
- DRAFT DESIGNED 3.20 m
- VESSEL TYPE COMMERCIAL: LCT
- HULL MATERIAL STEEL
- CLASSIFICATION ABS

#### TANK CAPACITIES

- FUEL OIL(DOMESTIC) 122.60 m3
- FUEL OIL(CARGO) 142.00 m3
- FRESH WATER 46.00 m3
- FRESH WATER (CARGO) 178.8 m3
- Ballast tanks/drill water 730.00m3
- Lubricate oil tanks 3.00 m3
- Dirty oil tank 3.00 m3

#### PERFORMANCES

- CRUISING SPEED 10 Knots
- ENDURANCE About 30 days
- RANGE About 6700 nautical miles

#### PROPULSION SYSTEM

- MAIN ENGINES 2 x YANMAR 6AYM-WET  
Marine Diesel Engine
- POWER 2 x 650 BHP@1900 rpm
- GENSET 2 x 105 Kva, DIESEL DRIVEN  
GENERATOR,415/3/50,  
3-WIRE ARE PROVIDED;  
ENGINES TO BE 24D.C. STARTED  
AND HEAT EXCHANGER COOLED
- GEARBOX Rentjes WAF364L RATIO 4.92 : 1

#### PUMPS

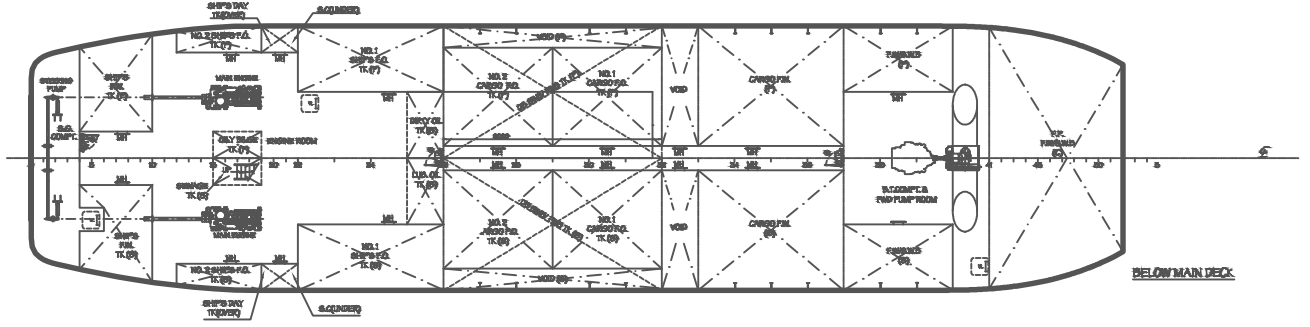
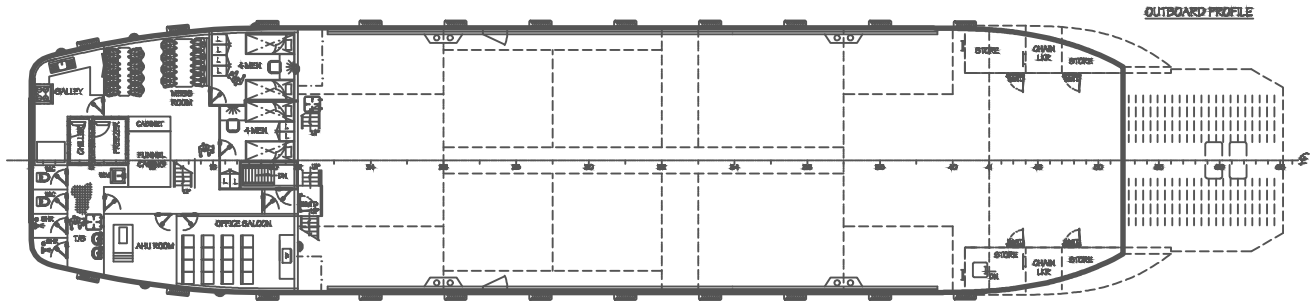
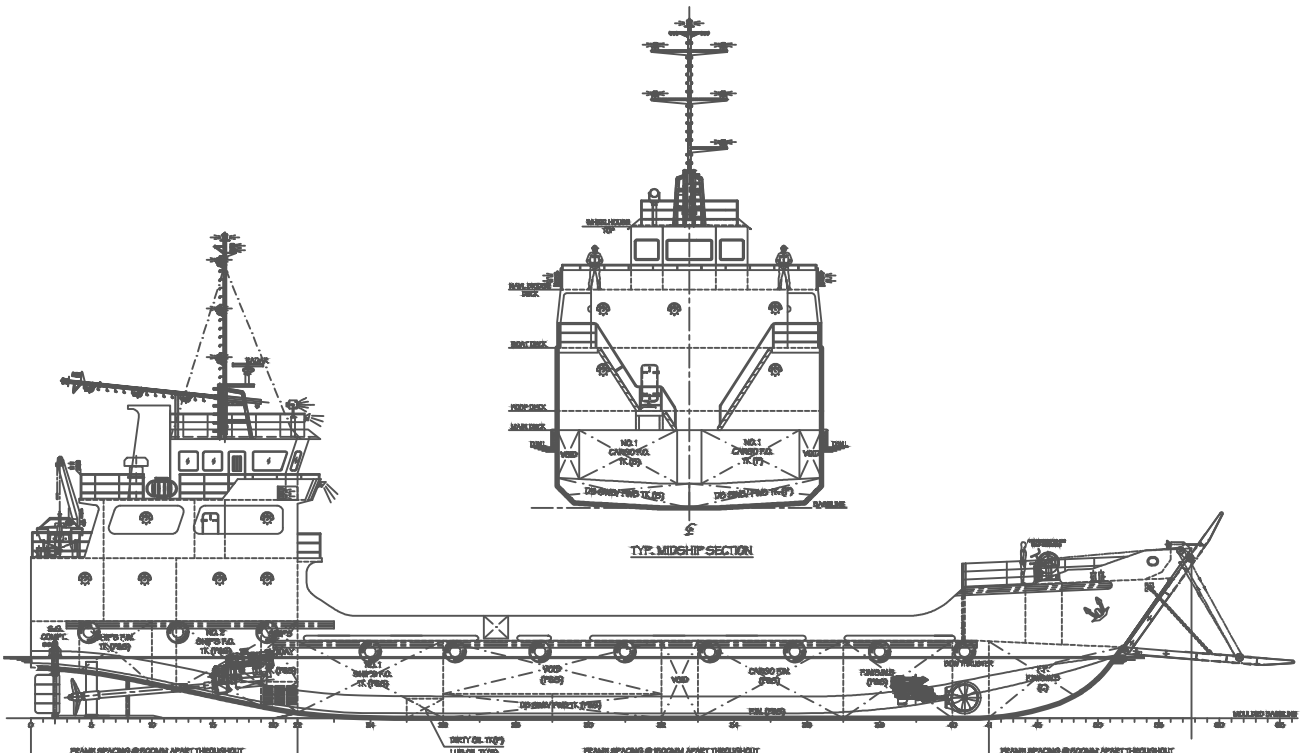
- Bilge, Fire & GS Pump 2 x 45m<sup>3</sup>/h @45m total head
- Ballast Pump 1 x 100m<sup>3</sup>/h @ 25m total head
- Fuel Transfer Pump 1 x 10m<sup>3</sup>/h @30m head
- Emergency Fire 1 x 25m<sup>3</sup>/h @45m
- Cargo Fuel Oil 1 x 150m<sup>3</sup>/h @ 60m head
- Cargo Fresh Water 1 x 80m<sup>3</sup>/h @ 60m head

#### ACCOMMODATION

- 2 x 1-berth cabins 2 men
- 2 x 2-berth cabins 4 men
- 2 x 4-berth cabins 8 men
- Total 14 men

#### DECK MACHINERY & SAFETY EQUIPMENT

- Bow Anchors (2) SPEK type Anchor w/ equivalent stockless bower mass of 1740kg.
- Bow Anchor Chains total 247.5 m length (shackles @ 27.5 m) of 36mm dia., grade 2 steel chain cables stud link chains
- Mooring lines 4 x 160M long mooring rope of minimum 132.4 kn breaking strength (nylon ropes)



**PRINCIPAL DIMENSIONS**

LENGTH O.A. (HULL)	47.00 M
LENGTH I.P.	45.72 M
BREADTH M.D.R.	12.50 M
DEPTH M.D.R.	5.50 M
DESIGN DRAFT	2.50 M
MAIN ENGINE	2 x YANMAR 6AY140-W6T
	850 HP @ 1800 RPM
CRACK BOX	STAD 4.08:1
DESIGN SPEED @ LIGHT LOAD	10 KNOTS
COMPLEMENT	14 CREWS
FUEL OIL	1222.0 M <sup>3</sup>
FRESH WATER	46.0 M <sup>3</sup>
CARGO FUEL OIL	145.0 M <sup>3</sup>
CARGO FRESH WATER	178.0 M <sup>3</sup>
WORKING DECK AREA	280 M <sup>2</sup>

**NOTES:**

1. \* \* \* \* \*  
 2. \* \* \* \* \*

*This drawing and the information contained herein are the property of AAM and shall remain the property of AAM. Any disclosure of this drawing to third parties without the written consent of AAM is prohibited.*

**AAM**  
 Amsterdam Alexandria Marine

Dezha Sipler Blvd 136  
 0102 TX Houston  
 The Netherlands  
 Tel: +3120 55 547210

<b>47-LANDING-CRAFT</b>		PROJ. NO.	AAM201401
<b>GENERAL-ARRANGEMENT</b>		DATE	2014-12-2013
REV.	DESCRIPTION	DATE	DATE
01/10		2.1	18-12-2013
		DATE	AAM201401-005